



Institute of Internet and Intelligent Technologies
Vilnius Gediminas Technical University
Saulėtekio al. 11, 10223 Vilnius, Lithuania
<http://www.isarc2008.vgtu.lt/>

**The 25th International Symposium
on Automation and Robotics in Construction**

June 26–29, 2008

ISARC-2008

LINEAR ELECTRIC DRIVES FOR CONSTRUCTIONAL PURPOSES

Roma Rinkeviciene

Vilnius Gediminas Technical University
Naugarduko str. 41, Vilnius Lithuania
LT-03227
roma.rinkeviciene@el.vgtu.lt

Algimantas Juozas Poska

Vilnius Gediminas Technical University
Naugarduko str. 41, Vilnius Lithuania
LT-03227
algimantas.poska@el.vgtu.lt

Alvydas Slepikas

Vilnius Gediminas Technical University
Naugarduko str. 41, Vilnius Lithuania
alvydas.slepikas@el.vgtu.lt

ABSTRACT

The paper discusses designing, modeling and application of electric drives with linear induction motors for constructional purposes: high voltage line fault localizing and shunting system of power supply for site, application of thyristors to shunt phase fault, horizontal transport systems with linear electric drives of constructional equipment for transportation of materials, and vertical transport systems with linear electric drives of constructional materials, review of design methods of special linear induction drives, transient responses of linear induction drives.

KEYWORDS

Linear induction drive, circuit-breaker, horizontal transportation systems, vertical transportation systems, dynamics of linear induction drives.

1. HIGH VOLTAGE LINE FAULT LOCALIZING AND SHUNTING SYSTEM OF POWER SUPPLY FOR SITE

Power supply of sites by temporary high voltage lines leads to high possibility of single phase fault and grounding. To avoid of burned wires, fire and overvoltages caused by single phase grounding of high voltage supply line with insulated neutral it was investigated and created technical equipment to determine location of single phase grounding and to shunt the faulted phase to grounding mesh of

substation. An automated system is based on circuit-breaker with separately controlled contacts by cylindrical linear induction motors and control equipment [1, 2, 3, 4]. This system creates possibility to protect 6-10 kV electric networks from overvoltages and other negative subsequence of single-phase grounding: electric arc, fire, burned wires and destroyed isolators, step voltage. It is evident, that at temporary sites application of high voltage phase fault localizing and shunting systems remains important decision, decreasing damage and protecting personal. The main imperfection of

equipment to shunt phase fault is certain delay from the single phase grounding instant therefore mentioned equipment does not protect the network from initial overvoltages. To improve automatic phase shunt and localizing system it is reasonable to develop hybrid high voltage commutators, where circuit-breaker with separately controlled contacts is supplemented by thyristor commutator with separately controlled arms which is used in portable substations for enlarged danger. The hybrid commutator allows to eliminate shortcomings both of circuit-breaker with separately controlled phases (small speediness at eliminating primary overvoltages) and thyristor commutator (danger of damage at double-line-to-neutral short circuit during shunting of phase-to-ground short circuit) shortcomings [5].

2. APPLICATION OF THYRISTORS TO SHUNT PHASE FAULT

In the power transmission lines, less than 1 kV, protective release equipment is used to protect human from touch voltage. The higher voltages require using high speed equipment to shunt touch voltage. High speed shunting of phase-to-ground fault replaces its location from possible to touch place to substation because the circuit-breaker shunts the damaged phase and reduces touch voltage to zero.

The first way is used in the 6 – 35 kV power lines, supplying portable equipment, for example, in quarries. The second one deals with application of high speed thyristor shunting equipment. This equipment limits the phase fault short circuit time and protects other not damaged phases from overvoltages, i.e. it reduces damage of insulation. The equipment to shunt phase fault is shown in Fig. 1. It comprises 3 thyristor commutators (one per each phase) and control unit, which is composed from faulted phase recognition circuits, automatic secondary switching units and locking units to lock phase-to-phase short circuit. Number and type of series connected thyristors in one arm is matched with dischargers protecting installation of substation equipment from overvoltages.

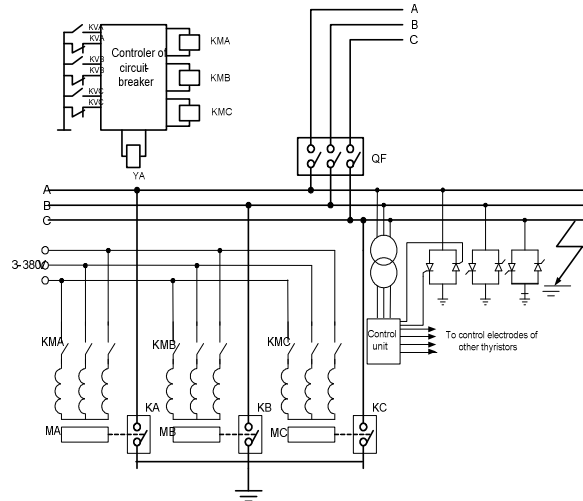


Figure 1. Hybrid commutator to shunt phase fault: KTA, KTB, KTC – voltage relays for each phase; KMA, KMB, KMC – contacts of linear motors; QF – the main circuit breaker of power supply line; KA, KB, KC – contacts of circuit-breaker for each phase; MA, MB, MC – linear induction motors

Hybrid commutator [5] protects the network from overvoltages and switches off the short circuit current if during the single phase grounding, the other phase also appears connected to ground and two-phase short circuit via ground happens.

During a short circuit in the network or if the human touches current leading parts, the displacement of neutral appears in the network. When phase-to-ground fault appears in 10 kV network, at first, the thyristor shunting equipment is launched after 3 ms in the substation. It reduces touch voltage to zero at the fault place. As thyristor shunting equipment cannot lead grounding current for a long time, it is complained with circuit-breaker with separately controlled contacts, which firmly connects the grounded phase with grounding mesh of substation.

The faulted phase is selected by special equipment according to the voltage reduction in the faulted phase and voltage increase in the leading phase.

Control equipment of thyristor shunting commutator and circuit-breaker with separately controlled contacts at first sends signals to thyristor controlling electrodes of thyristor shunting commutator, which shunt the damaged phase to substation grounding

mesh. Electrical circuit to shunt phase fault with both thyristor commutator and circuit breaker is shown in Fig.1.

3. HORIZONTAL TRANSPORT SYSTEMS WITH LINEAR ELECTRIC DRIVES FOR TRANSPORTATION OF CONSTRUCTIONAL MATERIALS AND EQUIPMENT

Discrete linear electric drive allows changing routs of material and equipment transportation in the sites. Linear induction drive comprises inductors of linear induction motors, fastened on the sleepers between rails, connected by cables with control desk. Buses, made from duralumin or other conducting material are placed at the bottom of the car, tracking by rails, serve as the secondary element, and common for all inductors of linear induction motors (LIM). Controlling devices connect to power supply one inductor after another, therefore the car together with constructional load or equipment is always provided by continuous thrust. If the sleepers and rails are moved to the other position, possibility to change flexibly transport routs of constructional materials and equipment is assured. System for transportation is given in Fig. 2.

A carriage with LIM for transportation of constructional materials is shown in Fig. 3. Reactive rail from steel or aluminum serves as the secondary element.

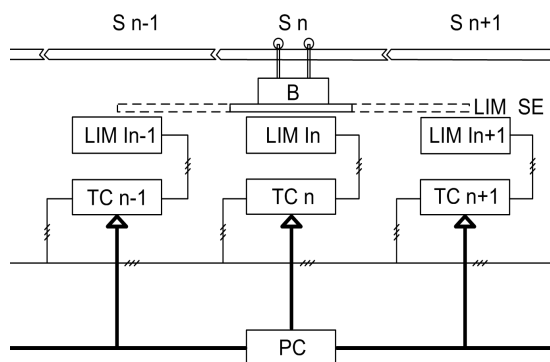


Figure 2. Block diagram of catapult: S – segments of route of bogie movement; B – bogie; LIM SE – secondary element of linear induction motor; LIM – inductors; TC – thyristor (reversible) commutator, PC – personal computer

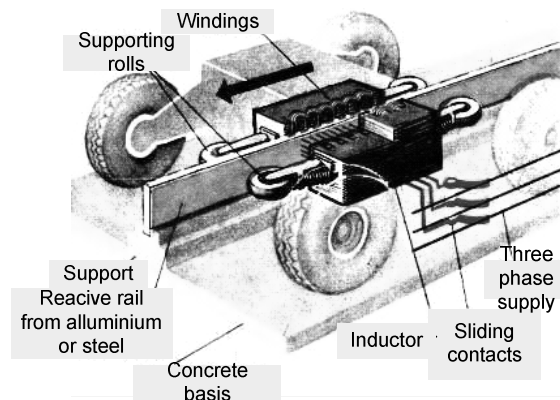


Figure 3. Carriage with linear motor

4. VERTICAL TRANSPORT SYSTEMS WITH LINEAR ELECTRIC DRIVES FOR TRANSPORTATION OF CONSTRUCTIONAL MATERIALS

Elevators, temporary fastened to building, are used for transportation of constructional materials and equipment during works. In elevators it is purposeful to apply linear induction drives, made from moving inductor, supplied via flexible cable and secondary element – conducting bus, fastened along the elevator Fig. 4.

Heavy inductor of linear induction motor serves as counterweight also. Speed of the elevator cabin can be adjusted by changing supply voltage frequency and amplitude. The advanced frequency converters are applied for this purpose.

5. REVIEW OF DESIGN METHODS OF SPECIAL LINEAR INDUCTION DRIVE

In the industry automation systems widely are used small power and relatively small speed linear induction motors (LIM) and on it base designed controlled linear electric drives. The speed-force characteristics of these LIM and controlled drives are close to linear. The influence of slip to the LIM inductor current are small also the dynamic power and current amplitudes are low in this kind of systems. Theoretically working and speed-force characteristics of motors and drives derived from the

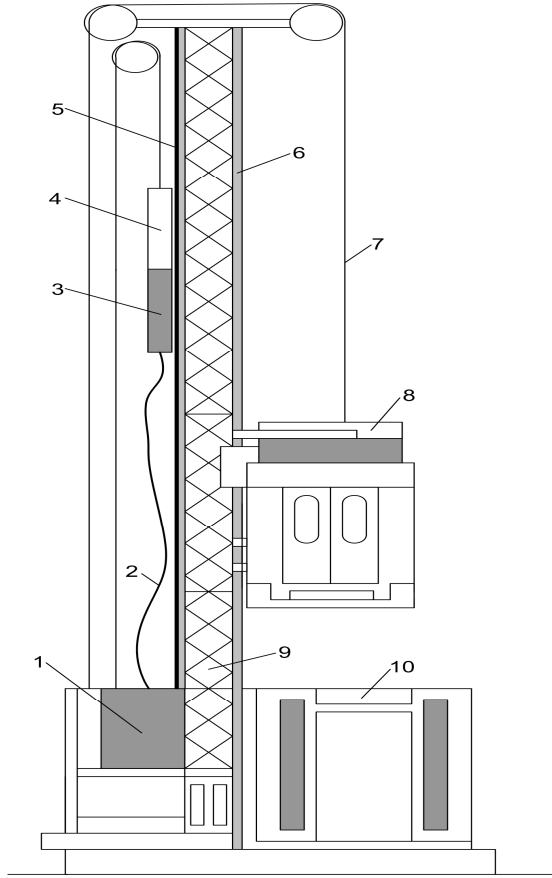


Fig. 4. Elevator for linear motors: 1 – control panel; 2 – flexible cable; 3 – LIM inductor; 4 – contra-weights; 5 – LIM secondary element; 6 –directives; 7 – lifting rope; 8 – cabin; 9 – rode; 10– entrance platform

LIM electromagnetic expressions have complex expressions. Problem gets more difficult because of LIM is asymmetrical three phase electrical energy receiver with reverse current component, which creates braking force component. Because of that, theoretical speed-force characteristic of a low speed LIM crosses the speed axis lower synchronous speed point when the low speed LIM supplied by the symmetrical three phase source. Therefore at designing the LIM and drive with them, it is useful to apply simplified LIM speed-force and working characteristic expressions derived with respect to mentioned features of linear induction motor and designed electric drive properties [6, 7].

6. DYNAMICS OF LINEAR INDUCTION DRIVES FOR CONSTRUCTIONAL PURPOSES

There are a lot of modifications of mathematical models of induction motor and each one has its area of application. Advanced electric drive is a mechatronic system wih contains both mechanical and electronic units. Linear induction drive operates at transients when the supply voltage amplitude and frequency are variable or speeds vary in time. The typical examples of induction motor transients are: direct starting after turn off, sudden mechanical loading, sudden short circuit, and reconnection after short supply fault, behavior during short intervals of supply voltages reduction, performance with PWM converter fed. Mathematical model of linear induction drive is described by system of nonlinear differential equations with varying in time parameters. This model is called model in phase coordinate system. For simplification of solution, Park transformation and reference frames moving with different speed are used. Computer models for investigation of transients in the phase coordinate system and synchronous coordinate system as well as fixed to stator are developed and are presented in the articles [8-12] and monograph [13].

The mathematical model of linear electric drive in a fixed reference frame to investigate transients was developed [10]. It looks like this:

$$\left. \begin{aligned} u_{1\alpha} &= \left[\left(\frac{1}{L_1} + \frac{L_m k_1}{L_1 L_2''} \right) \Psi_{1\alpha} - \frac{L_m}{L_1 L_2''} \Psi_{2\alpha} \right] R_1 + \frac{d\Psi_{1\alpha}}{dt}; \\ u_{1\beta} &= \left[\left(\frac{1}{L_1} + \frac{L_m k_1}{L_1 L_2''} \right) \Psi_{1\beta} - \frac{L_m}{L_1 L_2''} \Psi_{2\beta} \right] R_1 + \frac{d\Psi_{1\beta}}{dt}; \\ u'_{2\alpha} &= \left[\frac{1}{L_2''} (\Psi_{2\alpha} - k_1 \Psi_{1\alpha}) \right] R'_2 + \frac{d\Psi_{2\alpha}}{dt} + \frac{\pi}{\tau} v \cdot \Psi_{2\beta}; \\ u'_{2\beta} &= \left[\frac{1}{L_2''} (\Psi_{2\beta} - k_1 \Psi_{1\beta}) \right] R'_2 + \frac{d\Psi_{2\beta}}{dt} - \frac{\pi}{\tau} v \cdot \Psi_{2\alpha} \end{aligned} \right\} \quad (10)$$

$$F = \frac{3}{2} \frac{\pi}{\tau} (\Psi_{2\beta} i_{2\alpha} - \Psi_{2\alpha} i_{2\beta}), \quad (11)$$

where $k_1 = L_m / L_1$, $L''_2 = L_{1\sigma} + L'_{2\sigma} = L'_2 - \frac{L_m^2}{L_1}$ and L_m – magnetizing inductance, $L_1 = L_{1\sigma} + L_m$ and $L'_2 = L'_{2\sigma} + L_m$ is total inductances of inductor and

secondary that contain leakage inductances $L_{1\sigma}$ and $L'_{2\sigma}$; magnetizing inductance $L_m = \frac{3}{2}L_{12}$; L_{12} is the greatest inductance between any inductor winding and any winding of secondary when their axes coincide.

Elaborated Simulink models give possibility to investigate transients of linear electric drives operating in the short time or the intermittent periodic modes. Figures 5 and 6 show no load LIM developed transient force and speed during starting of no load drive.

Elaborated models of linear electric drive in moving with synchronous speed reference frame and fixed to stator show the same results [10].

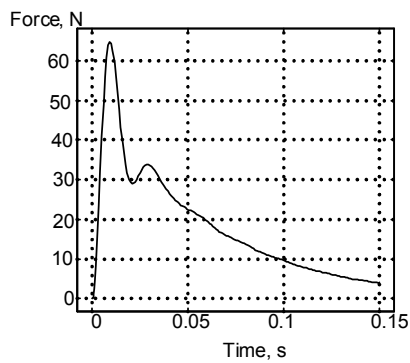


Figure 5. Dependence of no load LIM developed force against time

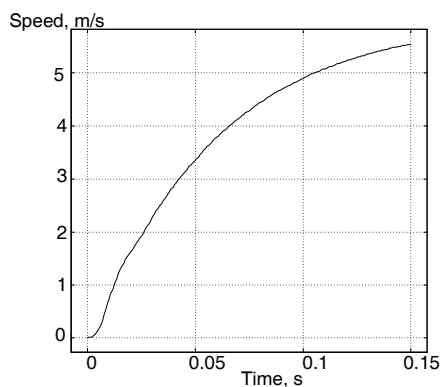


Figure 6. Dependence of no load LIM speed against time

7. EXPERIMENTAL INVESTIGATION OF LINEAR ELECTRIC DRIVES

In order to prove theoretical results, experimental stand with controlling and measuring devices was elaborated. View of stand is presented in Fig. 7.

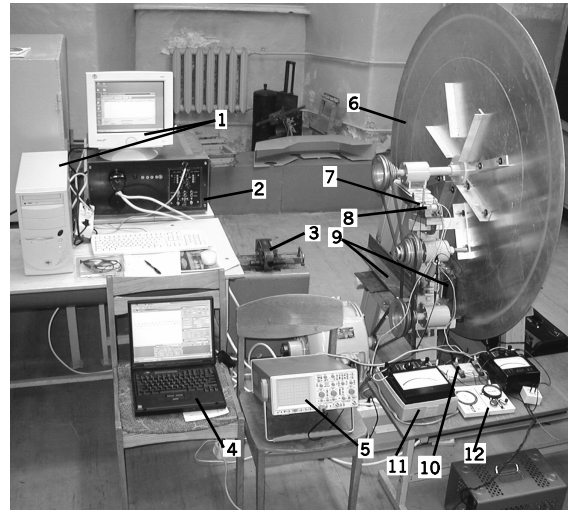


Figure 7. Universal discoid stand for experimental investigations of LIM with pulse control transducer and equipment to measure and record transients of current, speed and dynamic force: 1 – personal computer PC, 2 – pulse transducer IK, 3 – autotransformer, 4 – PC with software controlling oscilloscope and recording of results, 5 – digital oscilloscope, 6 – aluminum disc, 7 – digital oscilloscope, 9 – LIM inductor with fastening elements, 10 – shunts, 11 – voltmeter, 12 – tachometer

8. CONCLUSIONS

R Results of investigation and elaboration of linear electric drives shows possibilities to apply them successfully in temporary equipment of power supply sites for avoiding of damages from overvoltages, step and touch voltage. Horizontal and vertical transport systems with linear induction drives simplify construction of mechanisms and provides with desired characteristic of movement. Elaborated original computer models of linear induction drives allow to investigate various control modes of that and apply results in optimizing carried out drives.

REFERENCES

- [1] Poška, A. & Rinkevičienė, R. (2002) Protection from overvoltages in 10 kV networks. Proceedings of the XII International Conference on Electromagnetic Disturbances, Palanga, Lithuania, September 25-27, 50-51.
- [2] Rinkevičienė, R. & Poška, A. (2003) Cylindrical linear electric drives of industrial mechanisms. The 10th European conference on Power Electronics and Applications, Toulouse, France, September 2-4, issued on CD-ROM.
- [3] Poška, A. & Rinkevičienė, R. (2003) Dynamics of electric drive of high voltage circuit-breaker for shunting phase fault. Proceedings of the XIII International Conference on Electromagnetic Disturbances, Bialystok, Poland, September 24 – 26, 5.6-1– 5.6-4
- [4] Rinkevičienė, R. & Poška, A. (2004) Optimization parameters of linear induction motor to shunt phase fault. Proceedings of the 9th International conference on optimization of electronic and electrical equipment, Brasov, Romania, May 20-21, 71-76.
- [5] Rinkevičienė, R. & Poška, A. (2005) Hybrid high voltage commutator with separately controlled phases in Proceedings of the XV International Conference on Electromagnetic Disturbances, Kaunas-Bialystok, Lithuania-Poland, 189-193.
- [6] Rinkevičienė, R., Poška, A. & Smilgevičius A. (2004) Problems of investigation and development of Mechatronics systems with linear induction motors, Proceedings 11th International Power Electronics and Motion control conference, Riga, Latvia, September 2-4, Vol. 3 Electrical Machines, Actuators and Drives, 3-296 – 3-300.
- [7] Poška, A., Rinkevičienė R. & Savickienė Z. (2002) Controlled linear electric drives, Proceedings of the 10th International Conference European Power and Drives Association PEMC, Cavtat & Dubrovnik, Croatia, September 9-11, issued in CD-ROM.
- [8] Rinkevičienė, R., & Petrovas, A. (2005) Modelling of a controlled linear induction drive. Third International Conference on Systems, Signals & Devices SSD'5, Sousse, Tunisia, March 21-24, issued on CD-ROM.
- [9] Rinkevičienė, R., & Lisauskas, S. (2003) Models of linear mechatronic systems in Elektronika ir elektrotechnika, (Electronics and Electrical Engineering), No 4 (46) 69–73. (In Lithuanian).
- [10] Rinkevičienė, R., & Petrovas, A. (2004) New model of linear induction drive in Elektronika ir elektrotechnika, (Electronics and Electrical Engineering), No 2(51) 25–28.
- [11] Rinkevičienė, R., & Petrovas, A. (2005) Dynamic models of controlled linear induction drives. Elektronika ir elektrotechnika (Electronics and Electrical Engineering), No 5 (61), 23–27.
- [12] Rinkevičienė, R. & Petrovas, A. (2005) Dynamic Models of Linear Induction Drives in Information Technology and Control, Vol. 34, No. 1 37 – 41.
- [13] Rinkevičienė, R., Poška, A. J. & Smilgevičius, A. (2006) Mechatronic systems with linear induction motors. Theory and applications. Monograph 224