



**Institute of Internet and Intelligent Technologies**  
Vilnius Gediminas Technical University  
Saulėtekio al. 11, 10223 Vilnius, Lithuania  
<http://www.isarc2008.vgtu.lt/>

**The 25<sup>th</sup> International Symposium  
on Automation and Robotics in Construction**

**June 26–29, 2008**

**ISARC-2008**

## **LITPOS – A SERVICE FOR PRECISE POSITIONING IN REAL TIME**

**Eimuntas Parseliunas**

Institute of Geodesy, Vilnius Gediminas Technical University,  
Saulėtekio al. 11, LT-10223 Vilnius, Lithuania  
E-mail: [eimis@ap.vgtu.lt](mailto:eimis@ap.vgtu.lt)

### **ABSTRACT**

LitPOS – the state network of permanent reference GNSS stations – is operational from July 2007. It provides data both for the real-time and post-processing applications. LitPOS stations cover the all territory of Lithuania. Total number of GNSS stations is 25 therefore the integration of some stations of neighbouring countries is foreseen. It is possible on the basis of cooperation in *EUPOS*<sup>®</sup> project.

The European Position Determination System (*EUPOS*<sup>®</sup>) project is an initiative and cooperation of currently 15 Central and Eastern European countries (CEE) and two German states that build up a ground based European regional GNSS augmentation system with uniform standards that will cover a territory of about 10 million square kilometers. *EUPOS*<sup>®</sup> provides high quality differential GNSS information for high precise positioning and navigation usable in a large field of applications.

LitPOS is a multipurpose GNSS infrastructure for Lithuania. LitPOS combines a network of base GNSS stations with dedicated communication channels and appropriate hardware and software. Its main objective is to provide the 24/7/365 real time precise positioning service with national-wide coverage for the geodetic, cartographic, cadastral and construction applications.

### **KEYWORDS**

GNSS infrastructure, LITPOS, EUPOS, real time precise positioning

### **1. INTRODUCTION**

LitPOS is a new GNSS infrastructure for Lithuania. GNSS stations will be operational in July 2007. Its main objective is to provide the 24/7/365 real time precise positioning service with national-wide coverage for the geodetic, cartographic, cadastral and construction applications. LitPOS combines a network of base GNSS stations with dedicated

communication channels and appropriate hardware and software.

Main developers are:

- National Land Service under the Ministry of Agriculture – financial support and supervising;
- Private company "GPS Systems Baltija" – software and hardware;

- State enterprise "Infostruktūra", private company "FIMA" – infrastructure (dedicated Intranet lines, electric power supply);
- Geodetic Institute of VGTU – acting as overall coordinator and LitPOS operator.

Objectives of LitPOS:

- to foster the implementation of GNSS techniques in Lithuania;
- to support a broad spectrum of GNSS based applications in positioning and navigation;
- to economize precise geodetic and cadastral surveying and to bring better comfort to surveyors;
- to provide the 24/7 real time positioning service with national-wide coverage;
- to harmonize the national geodetic infrastructure with the EU countries and to facilitate the implementation of ETRS and EVS.

## 2. LITPOS - GENERAL FEATURES

LitPOS – a Multipurpose Positioning System for the Lithuania. It is an active network of permanent GNSS stations (Figure 1).

LitPOS stations become very important geodetic points having the combined set of geodetic parameters:

- Coordinates to LitPOS stations are transferred from National Zero Order GPS Network and EPN stations [1-4].



Figure 1. Distribution of LitPOS stations

- Geopotential heights and normal heights of National First Order Vertical Network are used for data transfer to LitPOS stations [5, 6].
- Gravity values of National Zero and First Order Gravimetric Network are used for data transfer to LitPOS stations [7, 8].
- Height transfer from National Vertical First Order Network by precise levelling to GNSS station benchmark, and height transfer from it to antenna pier by trigonometric levelling (using total station).

Services and Products provided by LitPOS:

- Real-time services: RTK (Real-Time Kinematic) using VRS (Virtual Reference Station) technology; and real-time DGPS service;
- Post-processing products: RINEX data files for further processing.

So LitPOS will provide the 24/7/365 real time precise positioning service with national-wide coverage for the geodetic, cartographic, cadastral and construction applications. That means, that it will contribute for large scale information dissemination, for example, Lithuanian Geographic Information Infrastructure [9–11].

## 3. LITPOS NETWORK STRUCTURE

Total number of GNSS stations is 25. They are communicating with 2 central servers using dedicated intranet lines.

Instrumentation of 15 stations (Figure 2): Trimble NetRS receivers with Chock ring antennas, TRIMMARK 3 RADIO MODEMS, PTU200 Combined pressure, humidity and temperature transmitters, DSL modem, AC adapter 12V, e-Power Switch, UPS, electric power gauge.

Instrumentation of 10 stations (Figure 3): Trimble 5700 receiver with Zephyr geodetic antennas, Com server, DSL modem, AC adapter 12V, e-Power Switch, UPS, electric power gauge.

Typical view of GPS antenna mounted on the roof of fire station is presented in Figure 4.

LitPOS hardware of operating centre consists of 3 PC and 2 servers (Figure 5).

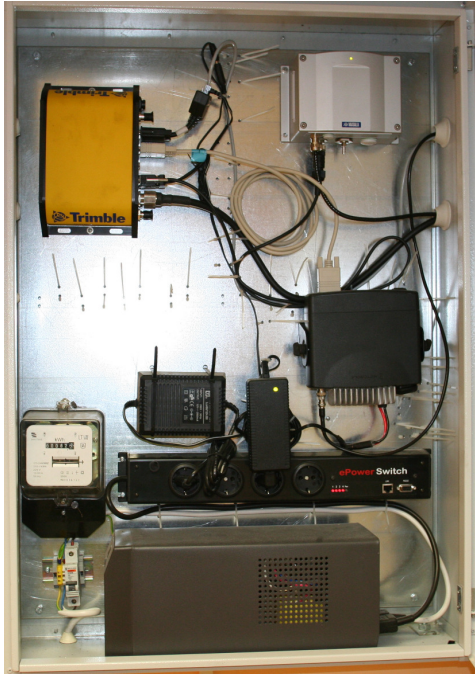


Figure 2. LitPOS station with Trimble NetRS receiver

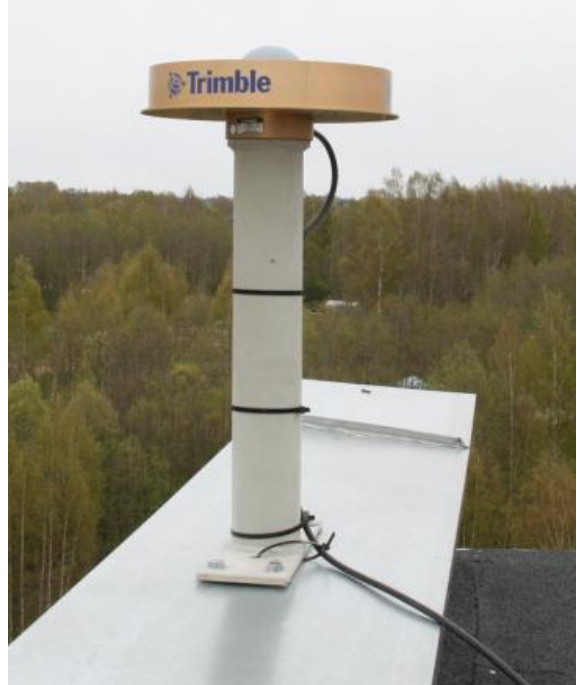


Figure 4. GPS antenna on the roof of fire station tower



Figure 3. LitPOS station with Trimble 5700 receiver

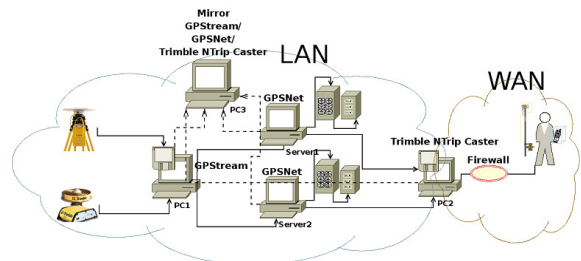


Figure 5. Principal scheme of hardware and data flows

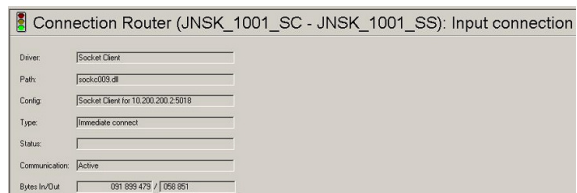


Figure 6. Example of connection router to station JNSK

LitPOS software modules are: GPStream (Figure 6), GPSNet (Figure 7), NTRIP Caster (Figures 8, 9).

ID	Station Name	NSat	Satellites
1020	ALYT	8	G02 G08 G10 G13 G16 G23 G25 G27
1019	BIRZ	9	G02 G07 G08 G10 G13 G16 G23 G25 G27
1003	DKST	6	G02 G08 G10 G13 G23 G25
1022	ELKT	8	G02 G08 G10 G13 G16 G23 G25 G27
1001	JNSK	9	G02 G07 G08 G10 G13 G16 G23 G25 G27
1016	KALUN	8	G02 G08 G10 G13 G16 G23 G25 G27
1017	KELM	9	G02 G07 G08 G10 G13 G16 G23 G25 G27
1010	KRTN	9	G02 G07 G08 G10 G13 G16 G23 G25 G27
1021	MRJM	8	G02 G08 G10 G13 G16 G23 G25 G27
1018	PNVZ	9	G02 G07 G08 G10 G13 G16 G23 G25 G27
1023	RIET	9	G02 G07 G08 G10 G13 G16 G23 G25 G27
1015	RKSK	9	G02 G07 G08 G10 G13 G16 G23 G25 G27
1007	SAKI	8	G02 G08 G10 G13 G16 G23 G25 G27
1011	SAUL	8	G02 G08 G10 G13 G16 G23 G25 G27
1013	SILT	8	G02 G08 G10 G13 G16 G23 G25 G27
1014	SLCN	7	G02 G10 G13 G16 G23 G25 G27
1004	SVNL	8	G02 G08 G10 G13 G16 G23 G25 G27
1008	TAUR	8	G02 G08 G10 G13 G16 G23 G25 G27
24	TELS	8	G02 G07 G10 G13 G16 G23 G25 G27
1006	UTEN	8	G02 G08 G10 G13 G16 G23 G25 G27
1009	VARN	8	G02 G08 G10 G13 G16 G23 G25 G27
1012	VEIS	6	G02 G10 G13 G16 G23 G25

Figure 7. DGPSNet Processor window

Mountpoint	Connection Type	Connections	Connected to Source	Source Host	Source Port
RTCM_23	Point to Point	0	No		
CMR	Point to Point	0	No		
JNSK_RTCM	Broadcast	0	Yes	10.200.16.7	2800
RTCM_30	Point to Point	0	No		
DGPS	Point to Point	0	No		

Active connections: 0      Inbound data rate: 0 Bytes/sec  
Total connections: 0      Outbound data rate: 0 Bytes/sec  
Caster uptime: 1d 02:40:15  
Ports: TCP 2101 (193.218.147.191)

Figure 8. Information on broadcasting stations

RTCM-Config: DBS RTCM 2.3 3(6), 16(59), 18/19(1), 22(6), 23(5), 24(5)

RTCM-Position: 3254951.2499 1423243.9948 5279547.5047

RTCM-Output: 2007.05.24 12:43:00, 1001, 10 Sats, G02 G06 G07 G08 G10 G13 G16 G23 G25 G27

Online-Status: No dial-in info supported

User: \_\_\_\_\_

Rover-Status: \_\_\_\_\_

Figure 9. Information on broadcasting station JNSK

#### 4. LITPOS – A PART OF EUPOS®

*EUPOS*® is both an international initiative and a project to establish and to provide a basis infrastructure particularly for positioning and navigation in Central and Eastern Europe (CEE) realized by ground-based multifunctional DGNSS reference station systems and services in the participating countries, which use agreed on uniform standards (Rosenthal *et al.* 2007). The *EUPOS*® ground-based GNSS augmentation system will cover about 25% of the European Union territory and more than 60% of the area of the whole Europe. Taking into consideration also the Russian territory in Asia where this infrastructure will be established, *EUPOS*® will be realized for an area of about 10 million square kilometers. Members of the *EUPOS*® cooperation are: Bosnia and Herzegovina, Bulgaria, Czech Republic, Estonia, Hungary, Latvia, Lithuania, Macedonia, Poland, Romania, Russia, Serbia and Montenegro, Slovakia, Ukraine and the German States Hamburg advisory and Berlin as chair.

*EUPOS*® provides DGNSS correction data for real-time positioning and navigation as well as GNSS

observation data for post-processing position determination. *EUPOS*® is able to support precise positioning and navigation with high accuracy (meter, decimeter, centimeter in real-time and centimeter and sub-centimeter in post-processing) and with guaranteed availability and quality. *EUPOS*® is independent of private company solutions and uses only international standards and open standards.

At last more than 800 *EUPOS*® reference stations are planned currently: circa 500 stations by the Russian Federation and about 300 stations by the other participating countries. The progress of the *EUPOS*® system realization in the member countries is different since it depends on financial facts. Lithuania receives funding support by the EC and realizes the national *EUPOS*® system in 2007. The establishment of the reference station systems advances in the most *EUPOS*® member countries too [12].



The cooperation in the EUPOS<sup>®</sup> project enables to include into LitPOS the stations of neighbouring GNSS networks, and vice versa (Figure 10).

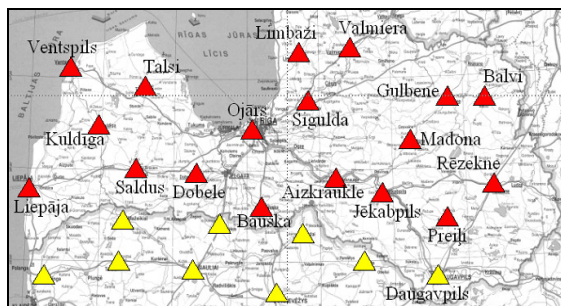


Figure 10. GNSS stations at Latvia-Lithuania border

## 5. CONCLUSIONS

1. LitPOS is a new geodetic infrastructure for referencing spatial geoinformation.
2. LitPOS provides the direct linkage to the National Coordinate System and height datum.
3. LitPOS provides the 24/7/365 real time precise positioning service with national-wide coverage for the geodetic, cartographic, cadastral and construction applications.
4. LitPOS is a part of EUPOS<sup>®</sup>.
5. Lithuanian EUPOS<sup>®</sup> website contributes for large scale information dissemination, for example, Lithuanian Geographic Information Infrastructure.

## 6. ACKNOWLEDGEMENTS

LitPOS development was sponsored by PHARE programme, project No 2003/004-341.02.02, and National Land Service, project number No 1405-P/77.

## REFERENCES

- [1] Jucevičiute, V., Kumetaitis, Z. and Šleiteris, E.; Būga, A.; Paršeliūnas, E.; Petroškevičius, P. (2003) Trends of Development of the Lithuanian National Geodetic Control. *Mitteilungen des Bundesamtes für Kartographie und Geodäsie Band 29*. Frankfurt am Main, 273–281.
- [2] Jucevičiute, V., Kumetaitis, Z. Šleiteris, E. Būga, A., Paršeliūnas, E., Petroškevičius, P. and Zakarevičius, A. (2004) Development of the Lithuanian National Geodetic Control, *Mitteilungen des Bundesamtes für*

*Kartographie und Geodäsie*, Band 33. Frankfurt am Main, 255–258.

- [3] Jivall, L. et al. (2005) Processing of the NKG 2003 GPS Campaign, in Reports in Geodesy and Geographical Information Systems. Lantmäteriet, Sweden: LMV-rapport 7. 104.
- [4] Jivall, L., Kaminskis, J. and Paršeliūnas, E. (2007) Improvement and extension of etrs 89 in Latvia and Lithuania based on the NKG 2003 GPS campaign. *Geodezija ir kartografija (Geodesy and Cartography)*, Vol. 33, No. 1, 13–20.
- [5] Petroškevičius, P. and Paršeliūnas, E. (1998) European Vertical Network expansion to Lithuania. *Geodesy and Cartography (Geodezija ir kartografija)*, Vol. 24, No. 3, 133–145.
- [6] Būga, A., Paršeliūnas, E. and Petroškevičius, P. (2002) Activities on Establishment of National Geodetic Vertical Network. *Mitteilungen des Bundesamtes für Kartographie und Geodäsie*. Frankfurt am Main, Vol. 28, 273–274.
- [7] Zakarevičius, A., Petroškevičius, P., Kumetaitis, Z. and Paršeliūnas, E. (2004) Sustainable development of Geodetic Networks in Lithuania, *Aplinkos tyrimai, inžinerija ir vadyba*, Vol. 1, No. 27, 102–107.
- [8] Petroškevičius, P. (2004) Gravitacijos lauko poveikis geodeziniam matavimams [Gravitation field effect on geodetic observations]. Vilnius: Technika, 290.
- [9] Zavadskas E. K., Kaklauskas A., Vainiūnas P., Kutut V. and Turskis Z. (2003) Efficiency increase of Internet-based information systems in real estate sector by applying multiple criteria decision support systems, *Journal of Civil Engineering and Management*, Vol. 9. Suppl. 2, 83–90.
- [10] Beconytė, G., Paršeliūnas, E., and Pubellier C. (2007) Sustainable development of the Lithuanian Geographic Information Infrastructure, *Ekologija*, Vol. 53, Suppl. 2, p. 22–26.
- [11] Beconytė, G., Govorov, M., Ningal, T. F., Paršeliūnas, E. and Urbanas S. (2008) Geographic information e-training initiatives for national spatial data infrastructures, *Baltic Journal on Sustainability*, Vol. 14, No. 1, 11–28.
- [12] Rosenthal, G., Blaser, A. and Sledzinski, J. (2007) The INTERREG III C Project EUPOS – Interregional Cooperation and EUPOS Status Report, *4th International Conference „Recent Problems in Geodesy and Related Fields with International Importance“*, February 28 – March 2, Inter Expo Centre, Sofia, Bulgaria, 12.